

# 2021.0129 ACEC/WSDOT PD Meeting

Friday, January 29, 2021 8:56 AM

## Attendees:

### WSDOT

Mike Fleming  
Larry Larson  
John Donahue  
Chad Hancock  
Brian White  
Chuck Meade  
Chris Keifenheim  
Kevin Miller - guest

### ACEC

Lisa Reid  
Ben Hoppe  
Surayta Halim  
Manuel Feliberti  
Daniel Babuca  
Steve Olling

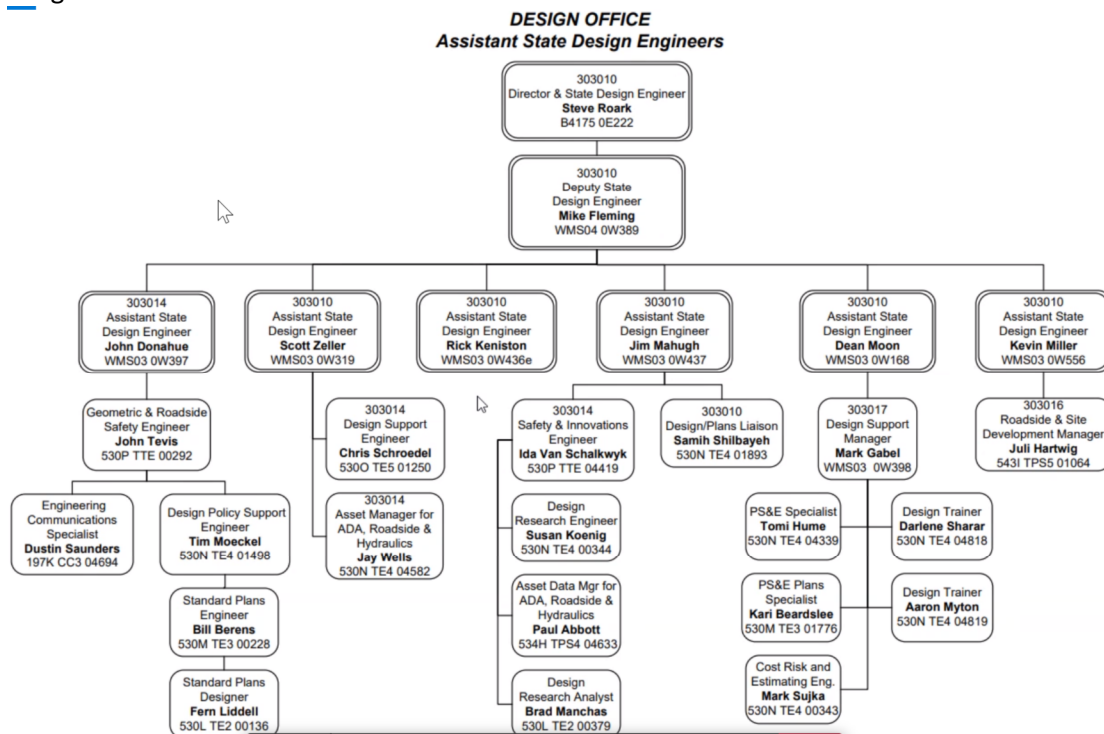
Lisa (ACEC co-chair) is working on adding a few members to this committee. So far we've reached out to 7 people and how to narrow it down to 3-4 over the next few weeks.

Mike Fleming has been co-chair for quite some time now. Brought Kevin in as potential new co-chair on the WSDOT side. Mike would likely stay involved in some way.

## **Staff Updates:**

- Larry Larson - on lockdown, challenging with respect to hiring. A few positions filled, quite a process with ASRB to get them filled. Have to send up to assistant secretary's office who filters to office of financial mgmt. At about 40% approval rating of positions to fill. Down 6 pos for 8 months at least, filling some with GEC/PMX. Asked for another 4 months with PMX, was turned down. Want to be staffed with the potential funding at legislature, but still have looming budget issues. Mostly operating in state of good repair. Need to report on what they're not going to deliver too - not just what can be delivered.
- Brian White - Bill Creston went to City of Yakima, Randy Giles will take on local programs position and have authorization to backfill. Hit or miss on approvals to fill positions. Low on staffing. Trying to infuse Jacobs' GEC with some money has been difficult. Being told now that new task orders outside the GEC (there was already a process within the GEC) must have a letter to the union informing them that they are sending work out to a consultant. There are furloughs coming in the next biennium - concern to some staff. Weird disconnect between work that is out there - can't use the tools (people internally or consultants) to get them done.
- Chris Keifenheim - similar, relatively good luck for approvals of positions that support state of good repair and fish passage, not so with Connecting Washington roles. Not filling thru GEC either. Paul Mayor is retiring (local programs) and will be backfilled - announcement in next month. Planning for worst case scenario - no new revenue and CW project delays.
- Chad Hancock - SWR filling RW supervisor positions, hoping to fill, training ground for WFL in Vancouver - lots of staff going there. Good luck making requests to fill positions, haven't asked for much. 19 positions to fill before COVID - have filled 4, some retirements - e.g. in Kelso had no supervisor. Not delivering because didn't get much design work done thru the summer.

- Chuck Meade - OLR Ron Landon retiring 2/28 - on PTO now Joe Perez will backfill his position. New program manager - Gaius Sanoy Will fill program manager role that Joe was filling PT. Need to backfill position. Tacoma PE office - PE position vacant because of movement of Lona Ludie who is no PE in Port Orchard - will backfill position.
- Suryata Halim - 520 - ? Promoted to deputy, 520 construction project is looking for a construction PE to fill.
- Ben Hoppe - opportunities when WSDOT unable to fill positions, haven't slowed down too much yet, tracking WSDOT self-performance of design, curious about RIFs in WSDOT (discussion or concern of??) Per Mike F - RIF answer is no discussion, no intent, handling staffing reduction thru attrition.
- Mike Fleming - HQ - challenging process - pause projects & later unfreeze, no interns & then request for what you need ... confusing and challenging to contractors and consultants as well as WSDOT. Little direction to slow down design projects, but had to do so with delays a bit. Big changes... Keith Metcalf retiring, Amy Scarton replacing, replacing her, Patty Rubstello backfilling Amy as Asst Secty of WSF, Julie Meredith now Asst Secretary at Urban Mobility & Access. Todd Daley heading back to his traffic group position in SCR to be replaced by Rick Keniston. Lots of changes under Mike - see below. Lost a newer trainer to ODOT, got approval to backfill and will move forward with that. A handful of temporary/interim mgmt assignments.



- Manual Feliberti - great year last year, this year nervous, lots of local agency projects on hold, pursuing a lot of WSDOT DB projects, many of which are delayed. Bellevue office getting help from other offices, now helping other offices in other states.
- Daniel Babuca - 167 GEC - steady on staffing, got the task orders that are going to come and expire at the end of the fiscal year, not sure what will happen in new fiscal year. Stage 1B project on pause list - moving toward new ad date. Un-paused yesterday so looking for new ad date. Started staffing and resource work for how GEC staff would transition to support. Likely ID 1-2 positions to fill in near term. Construction office had open position for business manager that they could not fill - filled thru GEC. Hired Lorelei Williams as new NWR Transportation Business Line Leader.
- Lisa Reid - SCJ Alliance - steady so far, but upcoming prospects are waning - looking forward is hard to predict. Talk to agencies and they don't see anything, then RFQ will come out. Hard to predict future staffing - agencies can't predict what is coming down the pipeline. Seeing more candidates including WSDOT candidates.

## Other Updates

- 24 furloughs proposed in the next biennium. All indications is that they will stick.
- Telework - good chance that will telework beyond July 1. Right now plan is to return July 1, depends on Governor's Healthy WA plan.
- Roger Millar - gave state of transportation presentation (search "TVW state of transportation" and will find - around the middle). Generally speaking, hit on a lot of the same things he's hit on in the past. Emphasis on State of Good Repair, Safety & Fish Passage. Correlated cost of lack of investment to a person - quantified the annual cost to a person ROI terms for transportation investments. Equity and diversity - social justice. Climate change. Keeping economy moving.
- Current budgets - current budget shored up with underspending and not backfilling positions, etc.
- Governor's 21-23 budget basically assumed working within existing and forecasted revenue. Meant robbing from large capital and shifting to fund FP (\$730M), adding to preservation all modes (\$490M), maintenance and capital facilities, ferries for electrification and new boat.
- Legislature - 18 cent gas tax proposal and carbon fuel taxes and a few more taxes increases equate to \$26-27B program over 10 years.
- Larry - conflict between MPOs and local agency about preservation needs and projects versus locally desired "Christmas ornament projects"
- How do we inform project lists - will be more discussion soon.
- FHWA rulemaking changes
  - Sent out changes, mostly wrt practical design. Looks like they're mostly catching up to AASHTO and state work to make better alignments.
  - Notion of 20 year design horizon is nice for significant infrastructure, with practical design may conflict with notion of a 20 year horizon. Look at it, but may not be the answer.
- Training - lots of discussion about what that will look like in the future. Working to get classes on the street. Pushing to get onto LTAP for consultant community too. Looking for short presentations on specific targets, modules, clips - will keep aware of them.
- Chad - Seeing LA issue with ADA compliance and state requirements, is there a gap in training what is required? Mike - more of a LA issue in prioritizing ADA. Generally - consultants know what is required, but have to bring that message to the LA clients. Noted that local agencies often don't include, funding agencies say they'd support, WSDOT ends up having to push back.
- Policy Updates - John Donahue - locking in revisions this time of year. John shared his list of upcoming DM updates (shown below), standard Plan updates (didn't capture)

HQ Design - 2021 Policy Work Plan (DRAFT FOR DISCUSSION 1/29/2021)			
Chapter	Category	Task	Task Notes
300	Documentation	Resource conservation area <u>clarification</u> (DM Exhibit 300-3)	RCAs are not mentioned right now, and roadside policy manual needs to be invoked at the right time.
300	Documentation	Move information from Exhibit 300-4 to Exhibit 300-3 and delete Exhibit 300-4 (organizational change)	Eliminating the distinction between "approvals" (Exhibit 300-3) and "process approvals" (Exhibit 300-4).
300	Documentation	300.04(1) - Currently refers to design approval <u>locking "design policy"</u> in general (other manuals and disciplines).	Change from "Design Policy" to "Design Manual version". Other policy leads do not want this connection to design approval.
321	Documentation	Stipulate conditions when a <u>Collision Analysis Report (CAR)</u> will eliminate the need to complete a Basis of Design.	Still being scoped
1100	Documentation	Provide better guidance on how and when to evaluate whether to change an element. This should mainly be a more consistent reference to mode, function, performance process.	Strike a balance between "bringing everything up to standards" and settling for non-standard elements (like a narrow shoulder) because it matches existing
1239	Documentation	Flexibility in using corridor consistency and other factors in <u>shoulder width decision</u> .	Fish passage projects are driving this improvement.
1100s	Documentation	<u>BOD exemptions</u> in 1100.10(1)(a)	Making this section so you do not have to go to 1105 and 1120 to find out if you can receive a BOD exemption
1102	Documentation	Update <u>CMAR</u> and guidance behind it to reflect interests and observations made by modal division input (Trevor Davis court, Brian Wood)	May involve updates context determination procedures and data. Multimodal labs feedback expected to drive content. Also consider progress made by FDOT, ODOT in their context classification guide and focus on speed management, design treatments, and associated design criteria
Single Issue - Multiple Chapters	Documentation	Approvals and <u>region designees</u>	Clarify how region delegated decisions are made where approvals are mentioned in the manual. Determine if we can describe a global rule on delegation, providing occasional exceptions as needed
720	Documentation	Terminology standardization (minor): 720.03(13) " <u>Screening</u> " Highway Structures called "Protective Screening" elsewhere	720.03(13), 1510.14(1), 1515.04, 560.02(4). Note glare screening is also called "Screening" in other places.
720 & 1260	Geometrics	Current policy requires vertical curve. Interest in providing <u>maximum grade break</u> vs speed. Driven by bridge approach slab questions.	TTI, TxDOT, OhioDOT, others are being reviewed. Note 1 Standard Plan A-60.30 specifies max 1" in 40' at approach.

1360	Geometrics	Ramp width issue (DM Exhibit 1239-6 and DM 1360): Lane and shoulder width consistent with AASHTO.	Concern that our guidance will result in ramps that are not wide enough using AASHTO.
1010	Traffic	1010.04(1) Transportation Management Plan - TMP and the mitigations replace the function of a formal design analysis.	DA's not used for <u>construction period modifications</u> , but the manual doesn't say that.
1103	Traffic	Introduce results of NCHRP 17-76 for <u>setting target speed</u> by context classification and roadway type.	Need to consult with Traffic Office on path forward here.
Multi Chapters	Traffic	Adding TSMO to DM	Possible Chapters so far: - DM 1010 and Glossary (traffic) - DM 550.05 and 550.05(2) (travel demand management). - DM 1100, DM 1104, multimodal requirements
1105	Preservation	Verify intent for roadside safety hardware work in P2 projects.	Possible splitting up Preservation row in <u>Exhibit 1105-1</u> into P1 and P2/P3 with different intents.
1120, 1600, 1610	Preservation	Clarify that 1120 content is only instruction for <u>P projects</u> , and 1600, 1610 are only content for <u>I projects</u> . Provide cross references as needed.	Driven by CPDM is now allowing rumble strip work in P1 projects using preservation dollars, and the guidance is in 1600.
1120	Preservation	Address what preservation means with respect to bringing things up to <u>previous standard</u> vs <u>new standard</u> .	Still being scoped. Communicate cost implications.

HQ Design - 2021 Policy Work Plan (DRAFT FOR DISCUSSION 1/29/2021)			
Chapter	Category	Task	Task Notes
730, 1510, new.	Safety	<u>Fall protection update</u> . Reference new cable rail, chain link options. Expand beyond the walls chapter.	Review revised WAC and bring into compliance. Bring additional provisions per NWR (eg anchor points for steep slopes)
1600	Safety	1600.05(1)(a) Change "Roadway Rumble Strips" to "Transverse Rumble Strips"	Terminology update and confirming <u>traffic office</u> contact
1600	Safety	<u>Clear zone refinements</u> : includes to left across the centerline line, introduce "intended lane of travel", address clear zone for part time use	Review state of practice.
1600	Barrier	Median protection update (width/ADT/type). Consider risk based approach (NCHRP 15-65 and/or NCHRP 22-31), state of the practice review.	Priority is test level selection for rural <u>median barrier conversion</u> (currently contact HQ Design)
1120, 1600	Safety	Remove measuring rumble strips in rehab (1120.03(7) and 1600.05). Use pavement van or standardize on one chip seal then rehab.	Also increase standard rumble depth where they immediately are chip sealed.
1600	Safety	DM 1600.02 and clear zone inventory form. Clarify that <u>clear zone include new features</u> (those constructed by the project).	
1610	Barrier	<u>Cable barrier in narrow medians</u> . Mods to GSP, DM guidance at a minimum.	Providing an alternative to median barrier types where occupant risk, drainage, or barrier installation cost are a factor. <u>State of the practice review</u> (ODOT US26, PennDOT PA56)
1610, GSP	Barrier	Add bullet 1610.04(4): Using steel posts in " <u>fire prone areas</u> ". Will also require a GSP	Consult ESO about what is a fire prone area and/or what makes the most sense from a sustainability standpoint.
740	Barrier	MASH implementation removing noise wall integrated traffic barrier - <u>740.02(2)</u>	Driven by MASH compliant approach to barrier and noise wall
Std Spec	Barrier	Stricter standards on <u>pressure treating wood posts</u> .	See WSU report on wood post decay and consensus recommendations memo
1330	ADA	Section 1330.04(4)(a) - review policy sources (ADA memo, transition plan, other policies) on when to <u>address APS and revise as needed</u> .	
1500's	ADA	Various ADA updates	Still being scoped
1340	Driveways	Rearrange Section 1340.03 for clarity (just organization)	Just reorganizing disjointed content for clarity
550	Access	WAC 468 58 080 allows <u>direct bus access</u> .	Update manual based on WAC revision
610	Geotech	Well decommissioning guidance (legal requirement)	AWV after action
1130	Dev. Serv.	Prepare new chapter 1130 Development Services.	Provide policy in the DM and Prepare guidance documents to supplement the new DM 1130. Improve awareness on Development procedures and retire the Development Svcs Manual.

- WSDOT and Department of Licensing - Agreement on electronic signatures. Will include a cover page certifying and showing the signatures included in the plans.
- Not hearing any issues from AGC or others on pilot projects related to sharing electronic info with bidding - no issues good or bad.
- Updates on status of this team and future priorities.



## Focus Areas

- Design Build Design Approval
  - Conceptual Design Approval (DA) – **Completed with DM Publishing**
  - DA Package at Proposal Stage in DB Manual – **Completed with DM Publishing**
- Project Delivery Tools
  - Project Delivery Method Selection Guidance revisions - **Complete**
- Design Build
  - Pre-procurement DB Manual Updates – **Complete**
  - DB Template Section 2 Elements Update – **In Progress – verify**
  - DB Selection Process – **Not Started (keep)**
- Policy Updates
  - Design Manual Chapter Reviews – **Ongoing**

# Focus Areas

- **Delivery Process Improvement**
  - Evaluation of SHRP2 C19 Expediting Project Delivery strategies – **Completed (No Action)**
  - Measuring Quality – **Not Started (Keep, WSDOT Team working on)**
  - Antiquated Documentation Requirements – **Not Started (keep)**
- **CEVP/CRA/VE**
  - Best Practices and Applications – **Not Started (Keep)**
  - Policy/Guidance Review and Updates – **Not Started (keep)**
- **Electronic Files For Bidding Purposes – In Progress (pilots going) No Issues thus far. Looking to codify into policy.**
- **Consultant Evaluation Process Update – Complete – Final Next up is CSO Manual appendices. Ask CSO to complete, us review**
- **Best Practices For Remote/Virtual Delivery**